



D U T Z

E Y E W E A R

PRESS RELEASE



SPRING / 2025





DUTZ  
EYEWEAR

# SPRING 2025 / SO DUTZ



Dutz Eyewear Spring 2025  
Collection:  
A celebration of bold design and  
trend-driven elegance

Dutz Eyewear is proud to unveil its Spring 2025 collection, a vibrant celebration of craftsmanship, creativity and trendsetting design. This season's lineup features a dynamic selection of frames that effortlessly combine bold aesthetics with timeless sophistication, perfect for those who embrace individuality and style. Drawing inspiration from contemporary art, nature, and the latest fashion influences, the collection reflects Dutz Eyewear's dedication to redefining eyewear fashion.

Each model is a reflection of the brand's dedication to quality, creativity, color and trend-forward thinking, offering something special for everyone who dares to stand out. Everybody can be so Dutz!

Discover the highlights of the Spring 2025 collection:

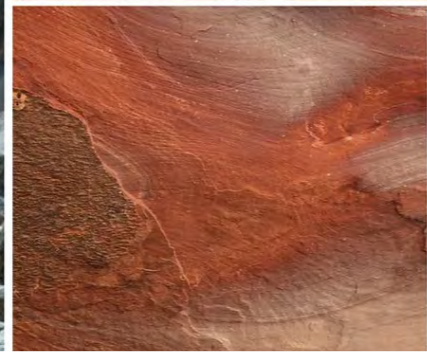
Arianne

Arianne Jonkergouw  
Purchasing & Design Manager Dutz Eyewear





Model D5028-15



COLOUR

SS 2025

# BASED ON THE FASHION TRENDS



Inspiration for the Dutz frames is found in fashion trends and foreign cultures where elements of impressions are moulded into frame designs with vibrant colors and personality combined with Dutch simplicity and elegance.



# LADIES COLLECTION SPRING 2025

We love simple details. Pure and contemporary lines, vibrant colours; the natural beauty of the eyes are fully revealed through the clean-cut design of the frames.  
A good balance between striking but commercial, matching the current fashion trend, that is what Dutz is all about again this spring season!



Model\_DS027-45





TREND  
SENSES

# TREND COLOR 2025 SUNSET CORAL



*So Dutz.*

Model DZ2361-65 refines the Dutz ladies' collection with a slim silhouette exuding grace. Precision-cut and laminated, its elegant curves and jewel-tone temples in tailormade acetate radiate charm in a stunning pallet of colors.

Finecrafted elegance designed for women who appreciate subtlety and timeless design.

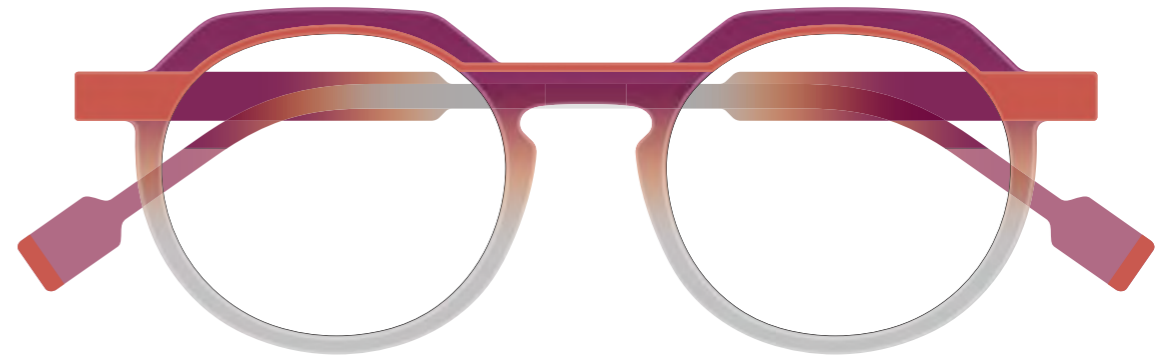




**PANTONE**  
16-1546 TCX  
Living Coral



## TREND COLOR 2025 SUNSET CORAL



*So Dutz.*

Inspired by sculpture, model DZ2352-76 embodies depth and feminine elegance. Layers of fuchsia, rusty brown, and taupe ombre acetate create a captivating interplay of shadow and light. Coral red lamination lines add a signature "So Dutz" touch, bringing a pop of color to this artistic design.



# TREND COLOR 2025 LEMON & LIME



*So Dutz.*

An extraordinary statement piece, this bold model DZ2354-15 combines graphic black-and-white striped acetate with a vibrant lemon-colored top rim and sleek metal temples. The result is a bold, artistic statement that transforms eyewear into an eye-catching fashion accessory. Bold design meets uncompromising style!





# TREND COLOR 2025: DUSTY ROSE



*So Dutz.*

From fashion people to the runway, all signs indicate that this elegant dusty rose color will be a huge 2025 trend. Minimalist elegance defines the design for model DZ885-55, featuring geometric rims and intricate color detailing in aqua, green, and dusty rose pink. A perfect balance of sophistication and trend-driven flair.





# TREND COLOR 2025 AQUATIC AWE



*So Dutz.*

Introducing model DZ886-46: a bold frame that combines contemporary design with the serenity of nature. The design highlights aqua, a key trend color for 2025, seamlessly blended with earthy tones to create a striking yet harmonious look. Perfect for those who appreciate individuality and style, this frame is a celebration of bold craftsmanship and the timeless allure of nature.





# TREND COLOR 2025 AQUATIC AWE



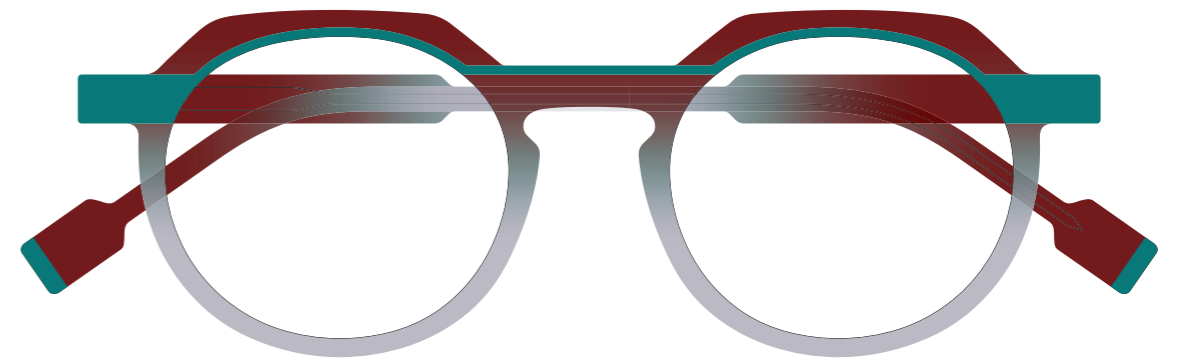
*So Dutz.*

Put art at the heart of your everyday life with model DZ2358-46. A true so Dutz signature concept, the large rectangle shape of this model surprises with its blend of transparent Mazzucchelli kaleidoscope acetate and striking line details in trend colors aqua and coral red.





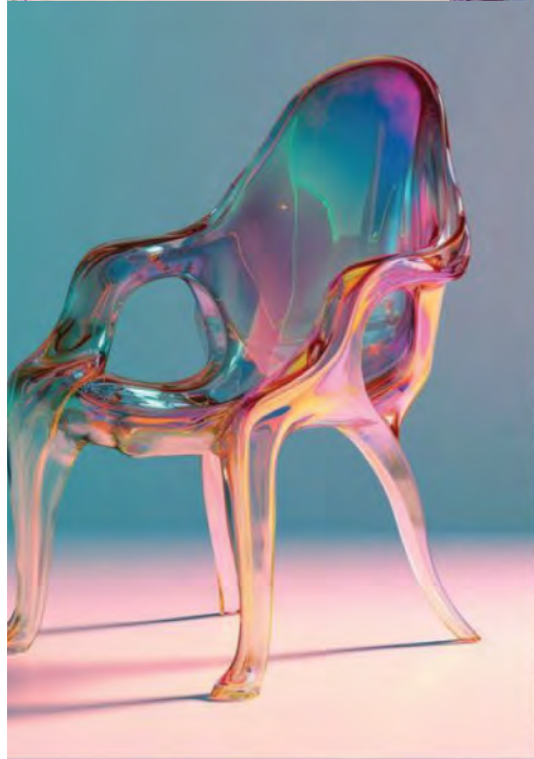
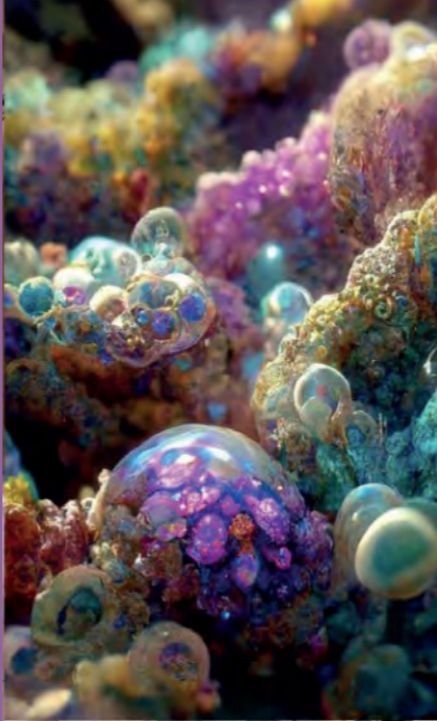
# TREND COLOR 2025 AQUATIC AWE



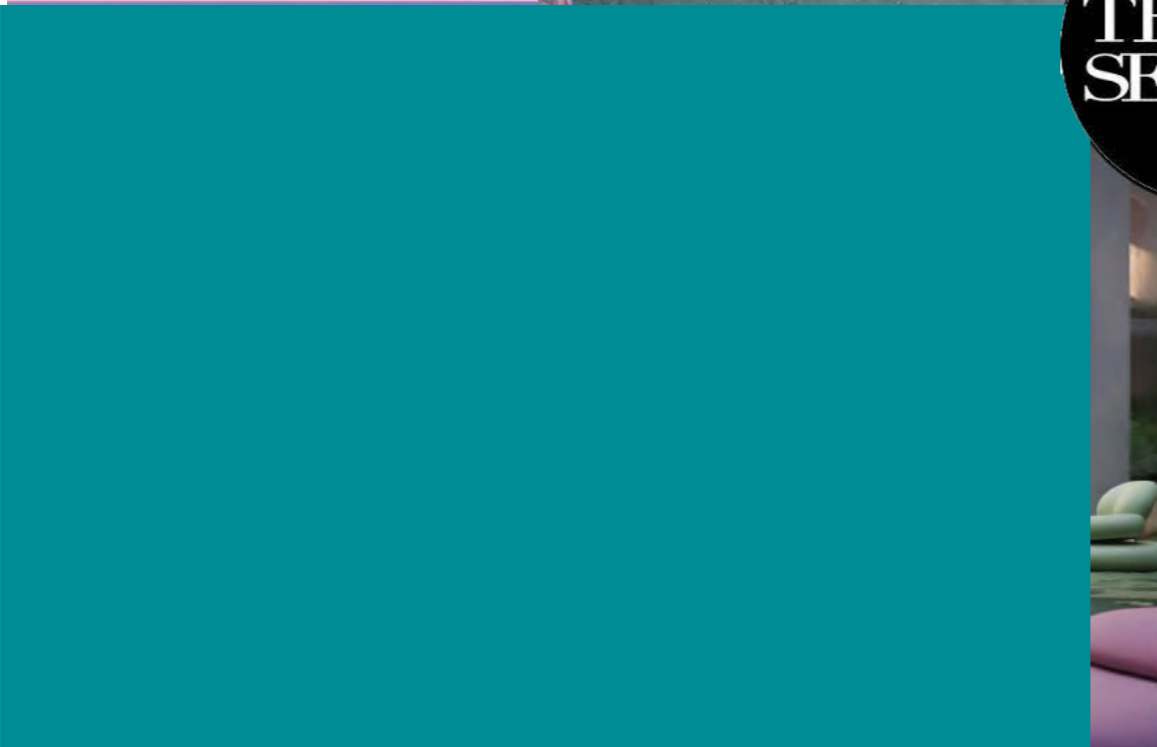
*So Dutz.*

Model DZ2352-46 combines generous laminated lines in trend color aqua with the apparent simplicity of the luminous minimalist burgundy-grey ombre acetate. The perfect balance between transparency and color embodies the fundamental concept of colour in its simplest form. Sophisticated and colourful!





**TREND  
SENSES**



# TREND 2025 PASTEL PRISM



*So Dutz.*

The three sculpted lines of color on the top rim of model DZ2357-46 appear like origami pleats around the eye.  
The minimalist ombre acetate material in trend colors aqua, purple and dusk pink creates a remarkable and unexpected visual harmony for a refined and feminine look.

**DUTZ**  
E Y E W E A R





# TREND COLOR 2025 PURPLE EVOLUTION



*So Dutz.*

Dutz Eyewear continues to redefine eyewear fashion with a stunning new frame from its Spring 2025 collection. This design embraces the "Purple Evolution" trend, featuring a striking nature inspired stripe pattern. The bold yet refined color palette adds a touch of sophistication, making this frame a must-have accessory for trendsetters who love to stand out.





# TREND COLOR 2025 RAY OF LIGHT



*So Dutz.*

This spring 2025, Dutz Eyewear takes center stage with a statement oversized ladies' frame that perfectly blends bold design and playful sophistication. Featuring a striking geometric shape, this acetate model DZ2358-75 is brought to life with a vibrant palette of trend colors, including purple, yellow ray flower, magenta, and blue. The dynamic interplay of colors creates an energetic yet balanced aesthetic. Contemporary design meets artistic flair!





# TREND 2025 FULL BLOOM



*So Dutz.*

Model DZ2362-55 is a vintage inspired model that exudes elegance and individuality. The on-trend square shape features a harmonious combination of subtle rosé-colored metal temples and a beautifully crafted acetate front. The designers have skillfully blended three distinct acetate materials, with tones of bottle green and warm fuchsia framing the design. At the center, a tailor-made acetate in green and pink captures the essence of the vintage flower trend, reimagined in a contemporary patchwork-like pattern.



# GENTS COLLECTION SPRING 2025

Model\_D5027-45







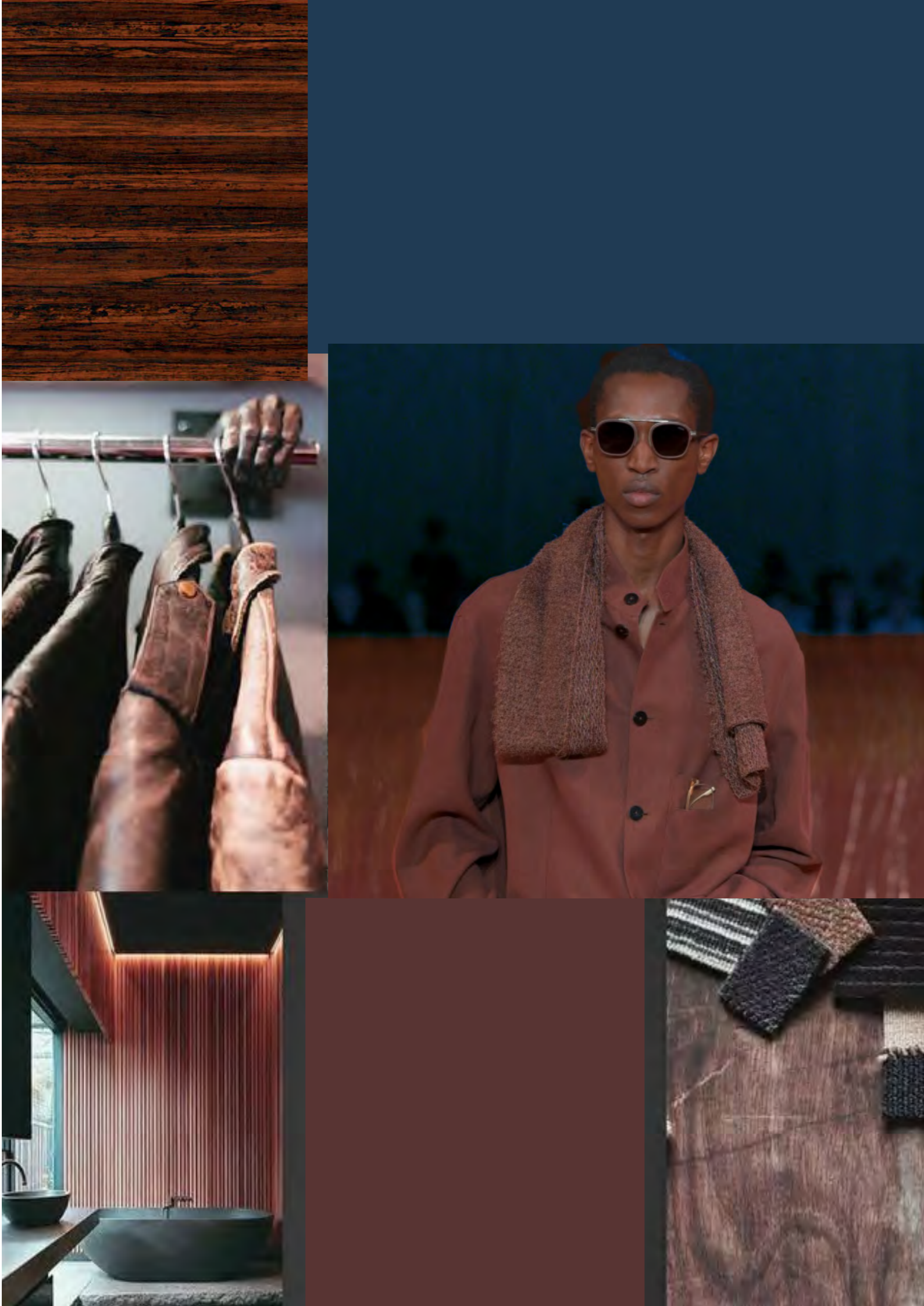
# TREND 2025 CHUNKY SQUARE



*So Dutz.*

Model DZ2351-65-55 is a striking geometric gent's frame that's designed to turn heads. The chunky square-shaped design features a bold stripe pattern in on-trend colors red and light olive green, perfectly complemented by Havana temples for a touch of balance and refinement. This eye-catching model is the ultimate choice for men who want to make a bold statement and showcase their individuality. An expression of confidence and personal style!





## TREND 2025 RUGGED & EARTHY



*So Dutz.*

Timeless gents' model DZ881-45 masterfully blends classic design with contemporary, earthy elements. This elegant metal frame in navy blue is elevated with a striking top rim in a brown/red 3-D wood print, perfectly capturing the rugged and natural trend of the season. This model is the ideal choice for men who appreciate understated sophistication combined with a touch of modern, trend-forward style.





# TREND 2025 MOONLIT GREY



*So Dutz.*

Model DZ883-85 is expertly crafted from durable stainless steel, showcasing a sophisticated three-tone design. It features two shades of grey complemented by a striking orange accent, creating a bold and masculine appeal. The signature "so Dutz" touch is evident in the vibrant orange line detail on the inner temples, adding a distinctive element to the frame. This model seamlessly blends style, comfort, and quality.





# TREND 2025 GLEAM GREEN



**DUTZ**  
EYEWEAR



*So Dutz.*

Model DZ2356-85 is a standout gents' acetate frame, designed to exude freshness and vitality. Featuring a sophisticated stripe pattern in sage green, beige and warm light grey, this frame captures the essence of cooling biospheric tints, bringing a sense of harmony and modernity. The translucent layers, paired with sculpted and beveled rims, reveal the full depth and richness of the color palette, offering a refined yet eye-catching aesthetic. Perfect for men seeking a timeless style with a contemporary twist, this frame embodies understated elegance with a bold edge.





## TREND 2025 GLOSSY BLACK



*So Dutz.*

A modern take on tradition: Introducing model DZ2359-45, a bold acetate gents' frame that reimagines classic elements from previous Dutz models. This refreshed design makes a powerful graphic statement, showcasing a striking glossy black-and-white kaleidoscopic stripe pattern. Layered with transparent hues of blue and mustard yellow, the frame exudes retro-inspired visual energy while maintaining a distinctly modern edge. Balancing nostalgic charm with contemporary style, this model is a testament to Dutz Eyewear's innovative craftsmanship, offering men a frame that embodies timeless sophistication with a daring, artistic twist.



# UNISEX COLLECTION SPRING 2025







# TREND 2025 SEASONAL OLIVE MIX-UP



*So Dutz.*

Proudly presenting model DZ2350, an updated take on the brand's iconic DZ2244, an enduring bestseller since 2019. This revamped design introduces a slightly chunkier silhouette paired with fresh, tailor-made acetate.

Crafted with a preppy, round shape, DZ2350-56 is presented in earthy tones of olive green and rusty, nature-inspired stripes. These shades are perfectly in line with emerging color trends, as evidenced by olive green's prominence in Gucci's 5/5 2025 collection.

The frame harmonizes contemporary style with the tranquility of nature.





# TREND 2025 BOLD & BRIGHT BLUE



*So Dutz.*

In the 2025 Mood for Blue Dutz Eyewear is setting the tone for spring 2025 with a bold embrace of blue, a color that captures simplicity, optimism, and power. Introducing Model 2355-46, a standout unisex design in a striking hexagonal shape. This frame combines mosaic-patterned acetate in vibrant blue and camel brown tones with bright blue metal accents, delivering the signature So Dutz pop of color. Perfect for those who dare to make a statement, Model 2355-46 seamlessly blends boldness with sophistication, embodying the spirit of modern eyewear fashion.



PRESS RELEASE SPRING 2025



So Dutz.

For more information, images, or inquiries please contact

Arianne Jonkergouw  
design@dutzeyewear.com  
+31648378231  
www.dutzeyewear.com